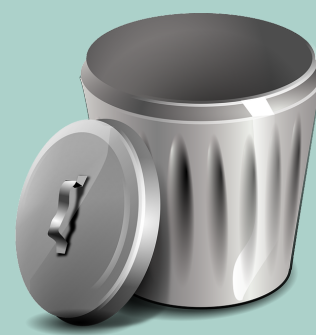
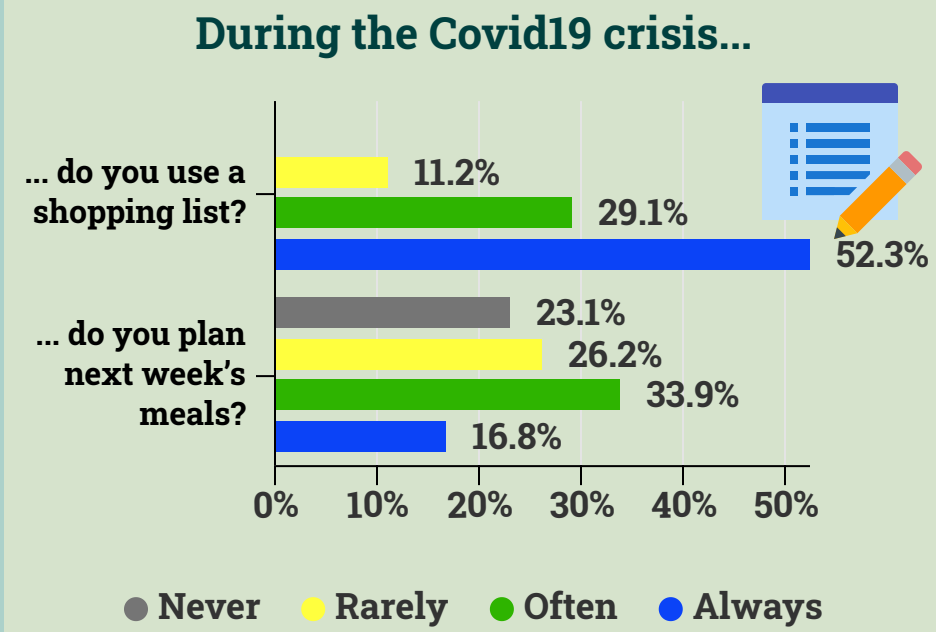




# Data from Food Waste Covid-19 era



Laboratory of Agribusiness Management  
Department of Business Administration of Food and Agricultural Enterprises - University of Patras  
Prokopios K. Theodoridis, Associate Professor - Theofanis V. Zacharatos, PhD Candidate

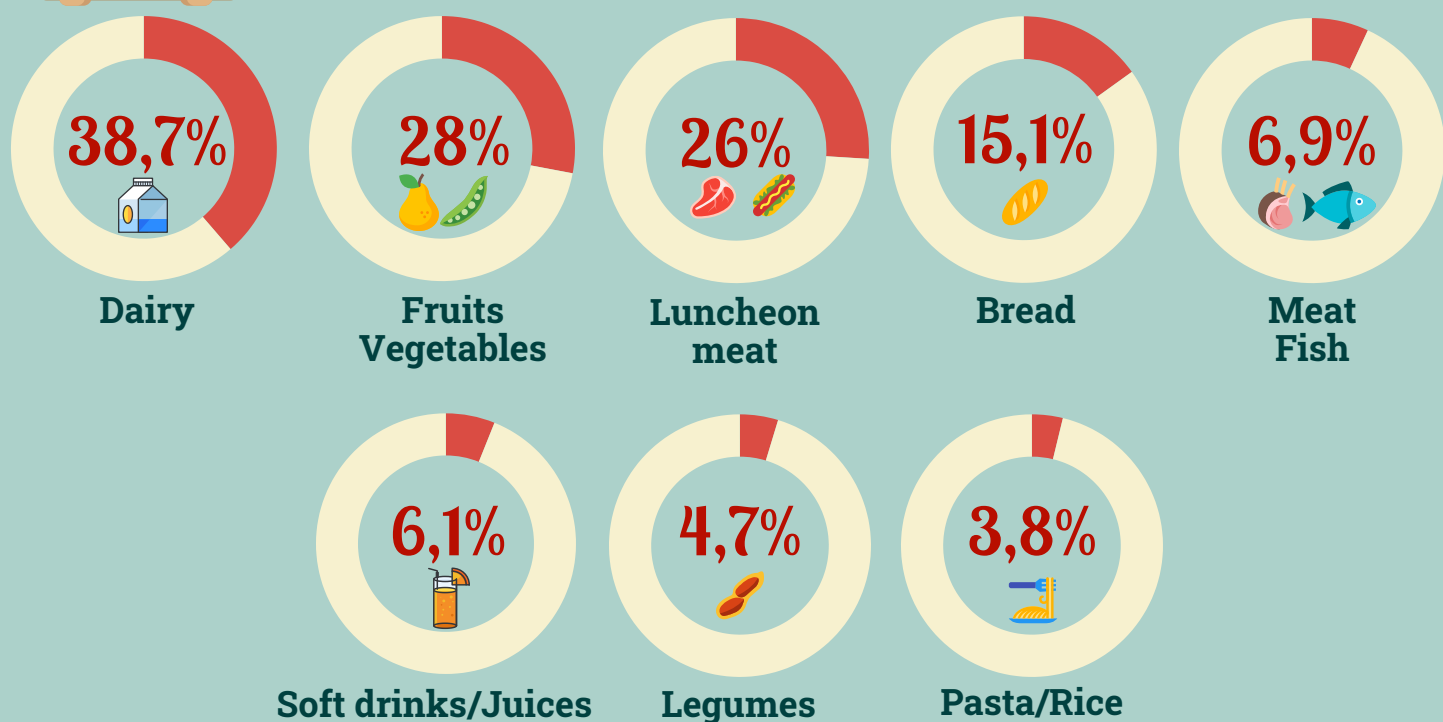


## Today, during the crisis...

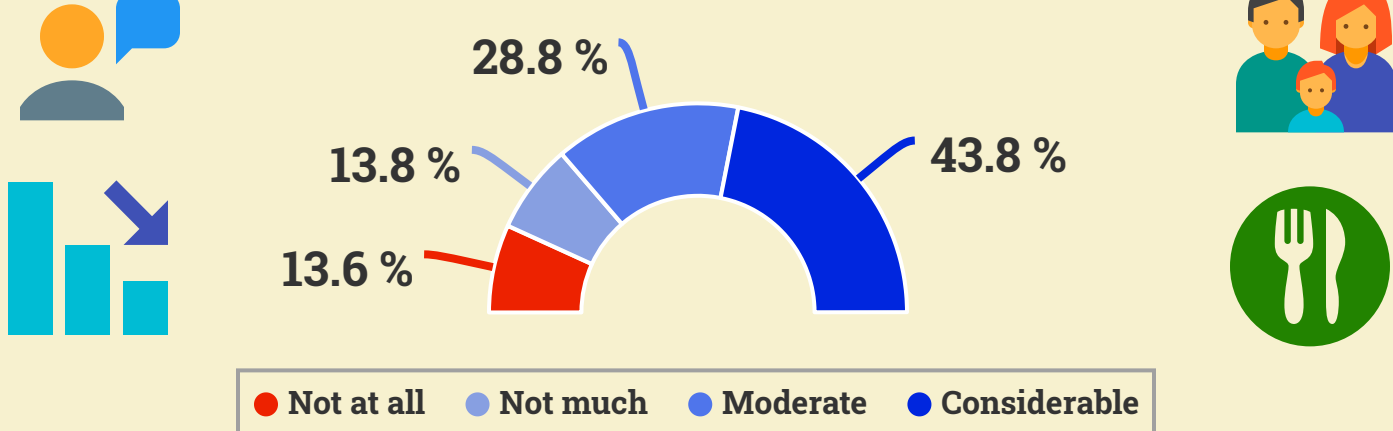


## ...but when we have to ...we more often dispose of

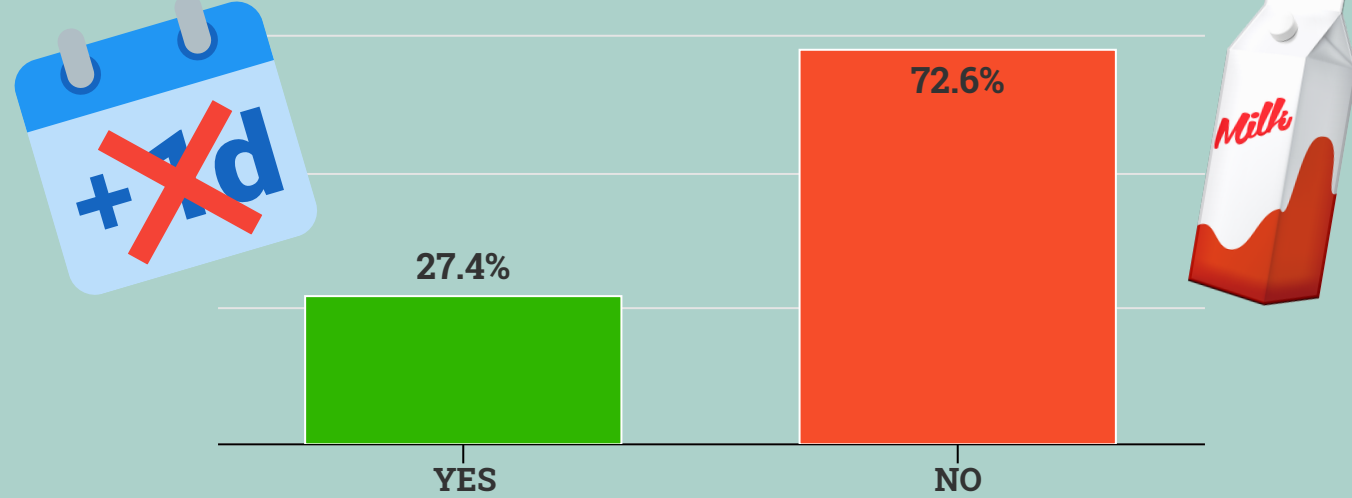
Choose up to 3 answers



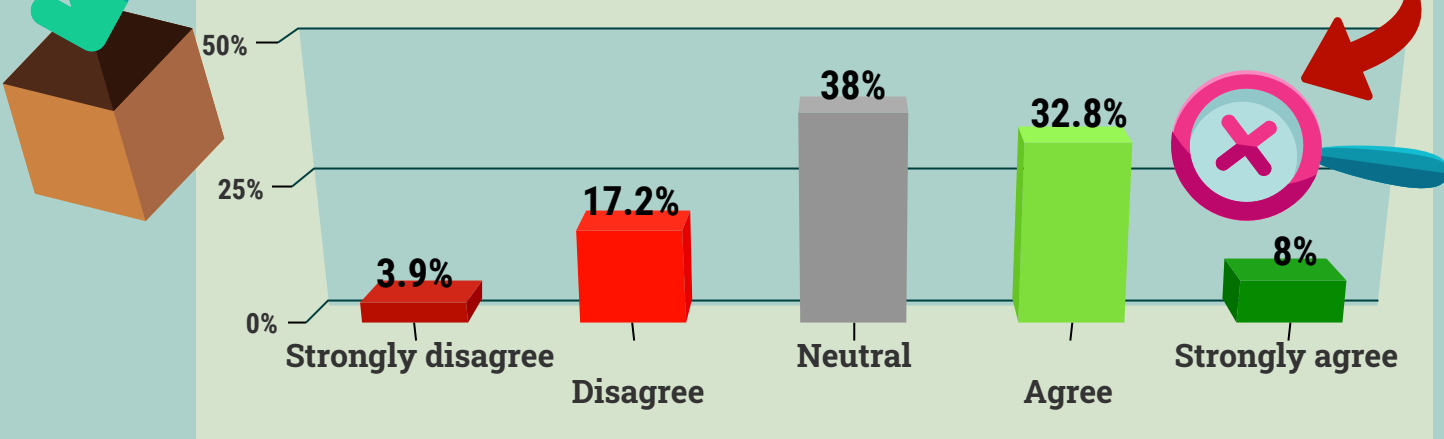
## During the Covid-19 crisis... indicate the degree of effort you put [household] in order to reduce the quantities of food you have to dispose?



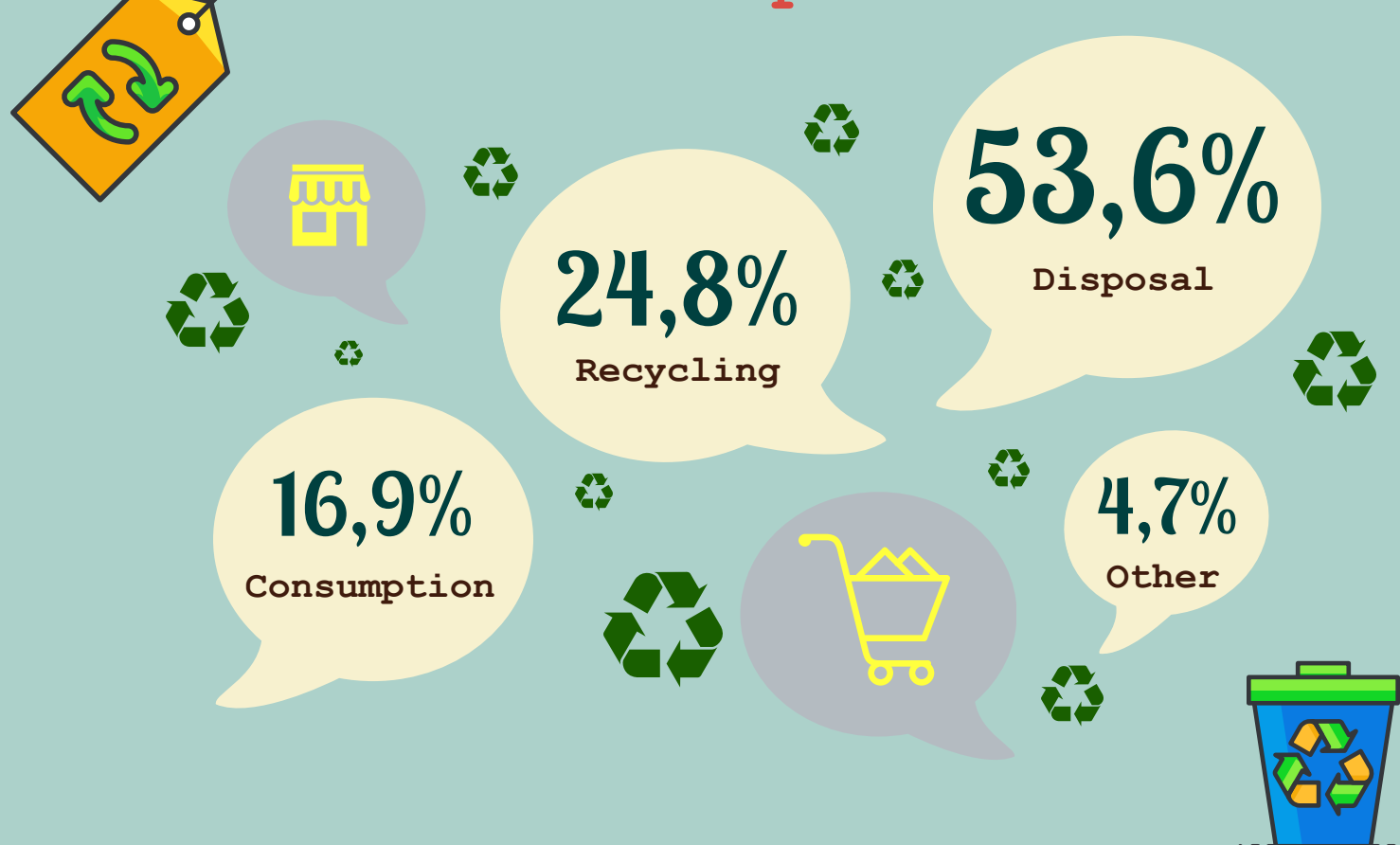
## ...During this period have you consciously consumed a product beyond its expiration date?



## The period of Covid-19 crisis, the food waste problem was reduced in our country

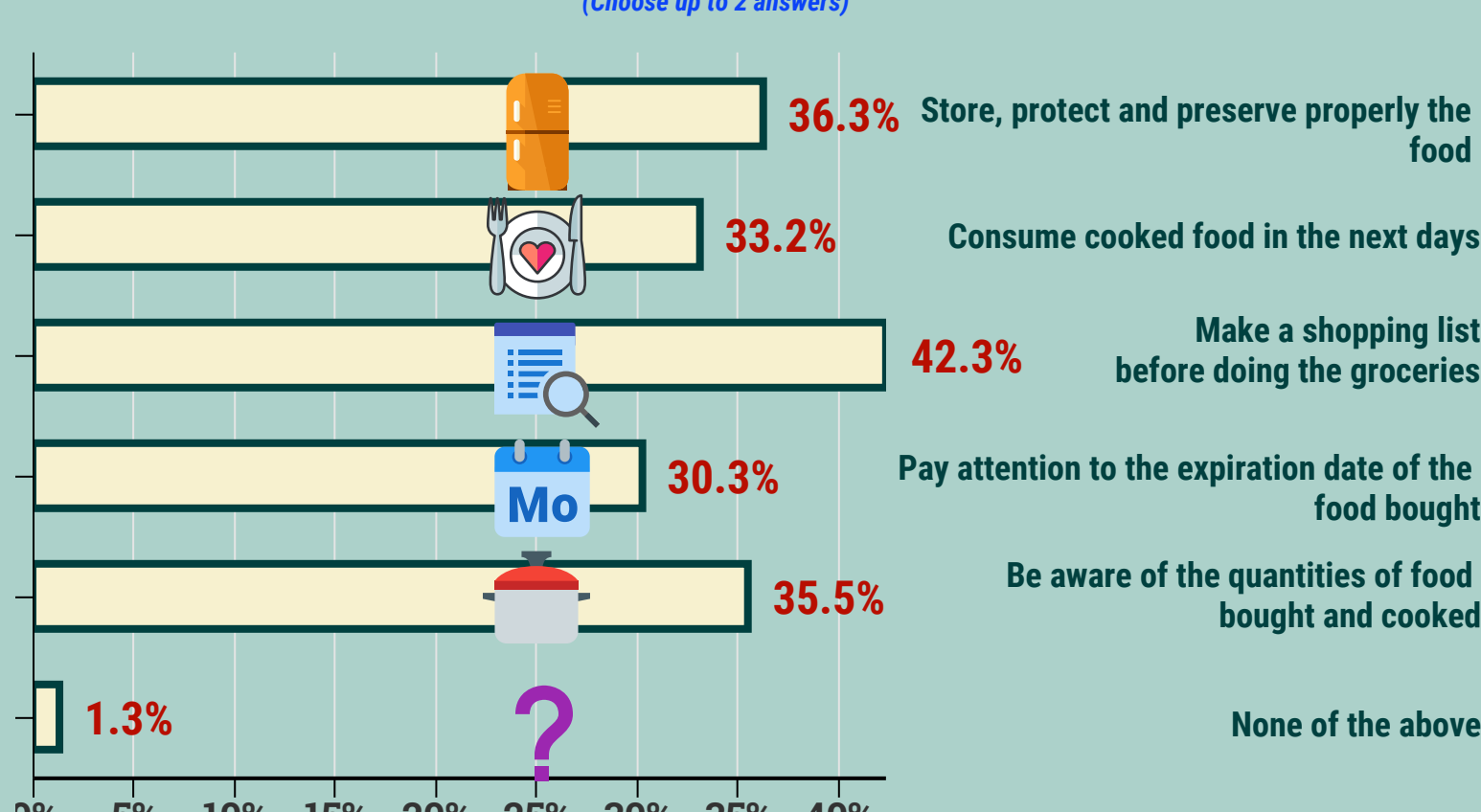


## During the Covid-19 crisis, how do you manage the products that have expired?



## Under the present circumstances, in which way you would reduce food waste?

(Choose up to 2 answers)



### Research profile

National sample - 2205 Households - April 2020- E-questionnaire.  
Household's composition: one member 4,1%, two members 10,1%, three members 20,4%, four members 44,0%, over five members 21,5%